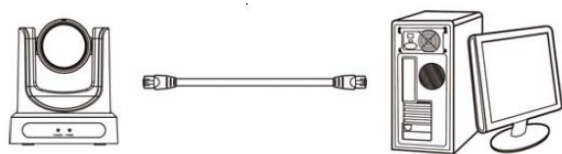


## How to Update MC1W(KY-PZ400N) Firmware

【Preparation】 Connect the camera as follows.



Connect by Network Cable

1. Download, and Unzip "UPGRADEv 2.9"
2. Save the "UPGRADEv 2.9" folder to a directory of choice on the PC
3. Go to the folder and run "Upgrade\_standard.exe"

upgrade v2.9

| 名前                     | 更新日時             | 種類         | サイズ      |
|------------------------|------------------|------------|----------|
| config.ini             | 2021/04/01 19:38 | 構成設定       | 1 KB     |
| ↑ upgrade_standard.exe | 2021/03/23 9:03  | アプリケーション   | 421 KB   |
| Qt5Core.dll            | 2020/11/23 10:29 | アプリケーション拡張 | 5,259 KB |
| D3Dcompiler_47.dll     | 2017/04/28 6:50  | アプリケーション拡張 | 3,467 KB |
| Qt5Svg.dll             | 2016/06/11 1:51  | アプリケーション拡張 | 340 KB   |

4. Press the "Search" button to search for the KY-PZ400.

UPGRADE v2.9

Search Upgrade Preview

Devices: 1 Interface: イーサネット:192.168.100.99 Search

| No | IP Address     | NetMask        | GateWay        | MAC Address       | Uptime   | Version | Device |
|----|----------------|----------------|----------------|-------------------|----------|---------|--------|
| 1  | 192.168.100.88 | 255.255.255... | 192.168.100... | D4:E0:8E:A8:DE... | 00:03:52 | 1.1.22  | F33... |

Config Backup

192.168.100.88 D4:E0:8E:A8:DE:0E 2dc6c2d910264721898436ef7ee10491

Mode: Manual ☐ Snapshot

IP Address: 192.168.100.88

NetMask: 255.255.255.0

GateWay: 192.168.100.1

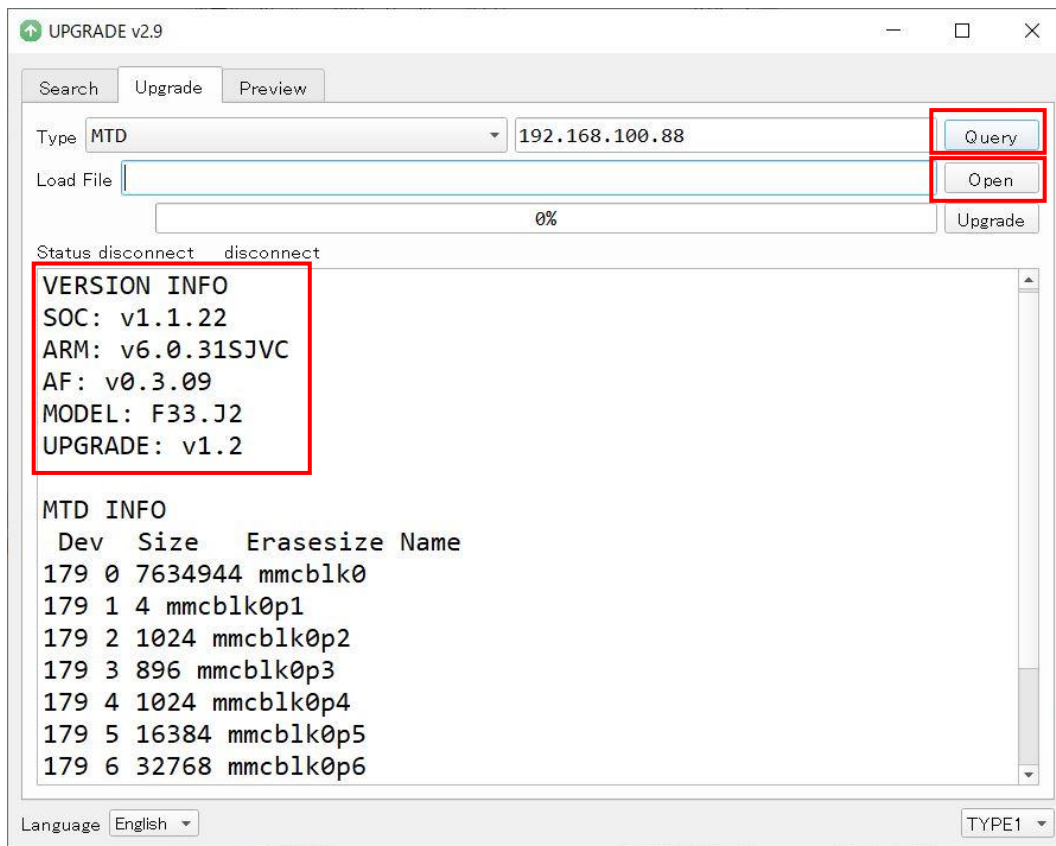
First DNS: 8.8.8.8

MAC Address: D4 : E0 : 8E : A8 : DE : 0E

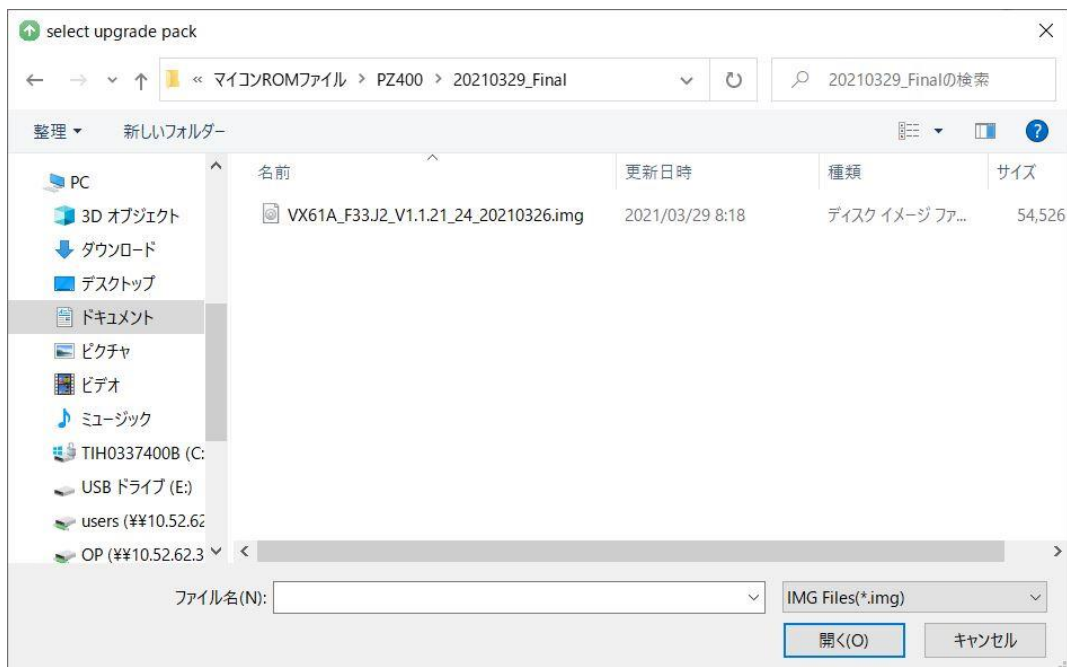
Set Rewrite Default

Language: English TYPE1

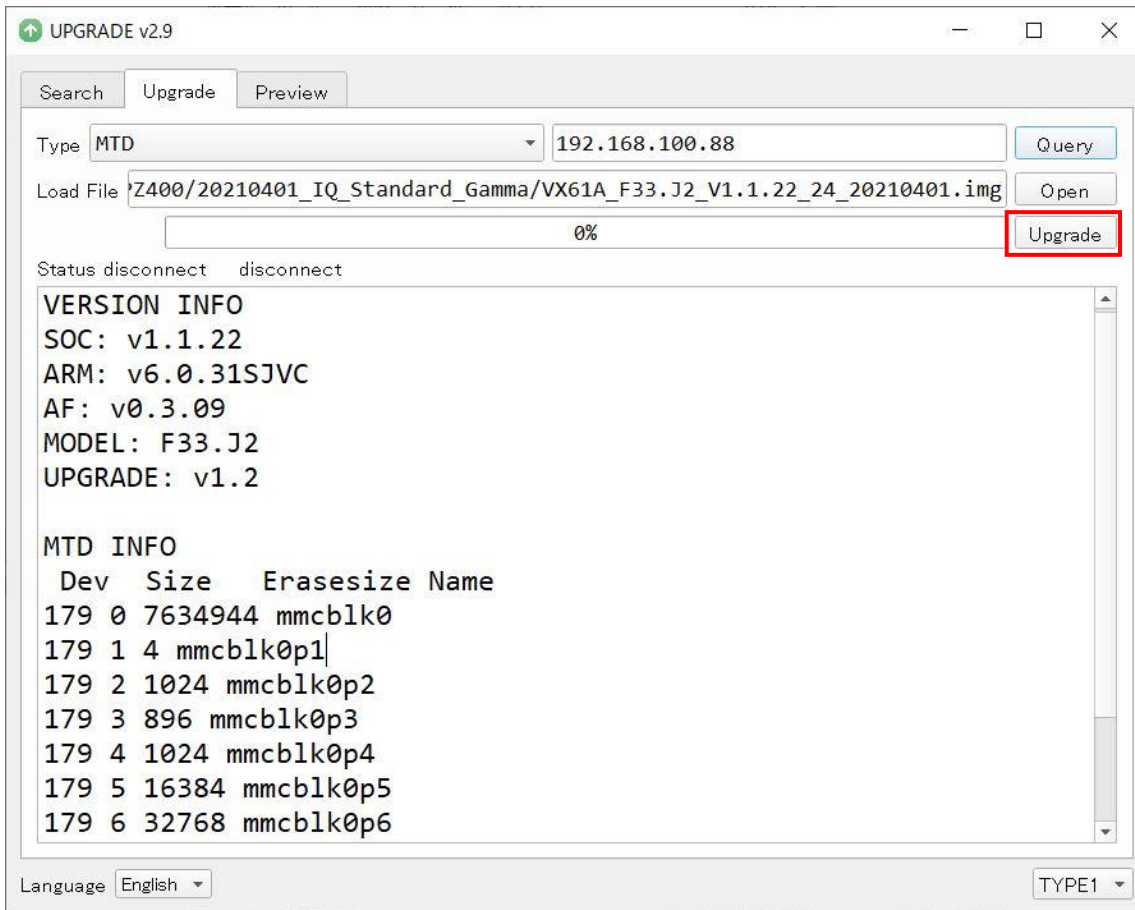
5. Press the “Query” button to check the current version.



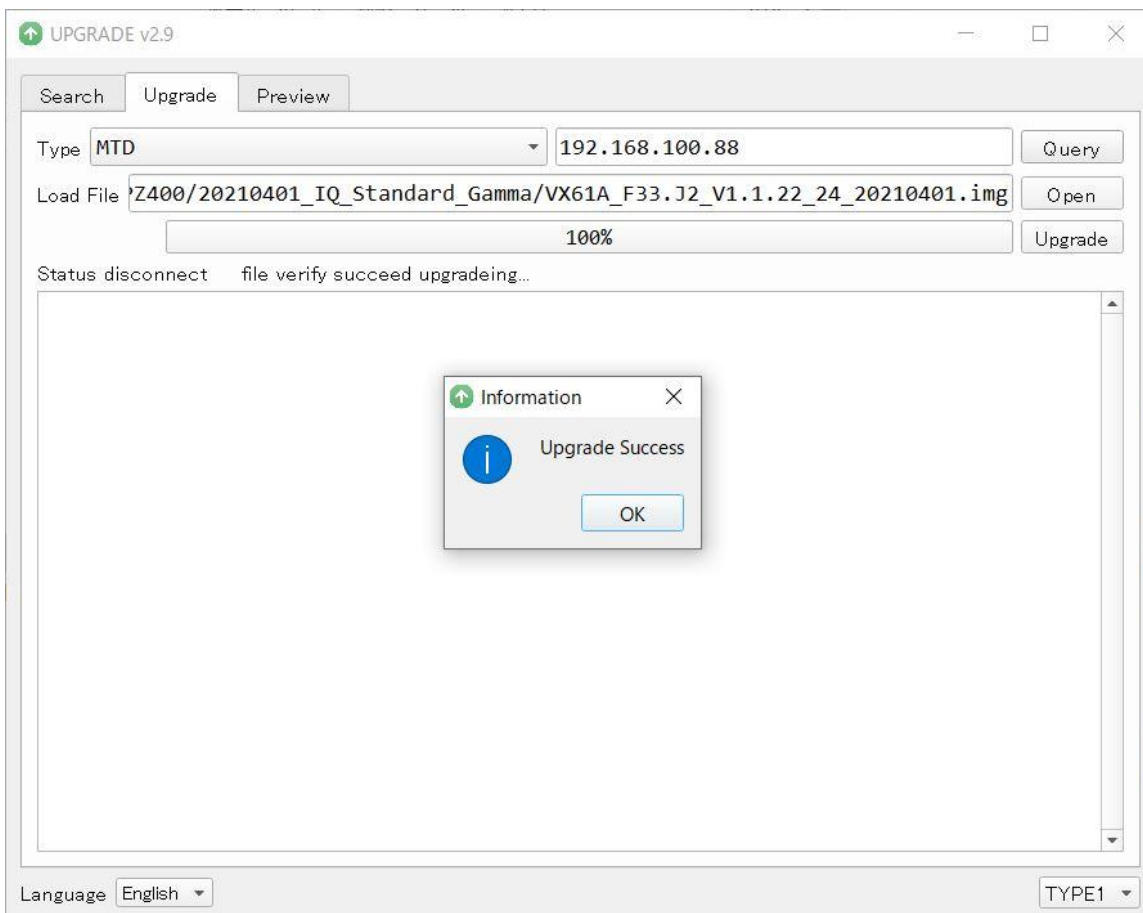
6. Press the “Open” button to load the update 「.img」 file.



7. Press the “Upgrade” button to start writing firmware.



8. When the progress bar reaches 100% and OK is displayed, the update is completed.



9. **Note:** Should problems occur after the Update, please go to 10.

10. Press and hold the “RESTORE” button for 5 to 10 seconds until the reboot starts.

When the initialization operation is completed, the update operation is completed.

